

PART OF THE SE.1/4, OF THE SW.1/4, OF SEC. 27, T.6N., R.1W., S.L.B. & M.

89

NOB HILL ADDITION

BLOCKS 12 & 13

IN OGDEN CITY

TAXING UNIT: 25

24TH STREET

SCALE 1" = 50'

SEE PAGE 96

POLK AVENUE

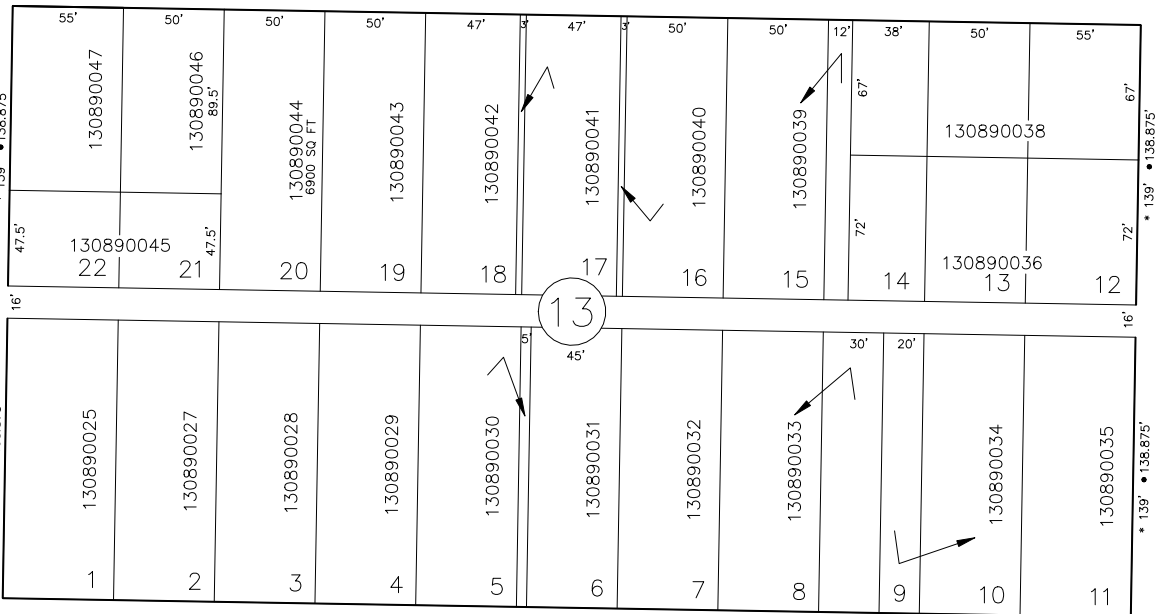
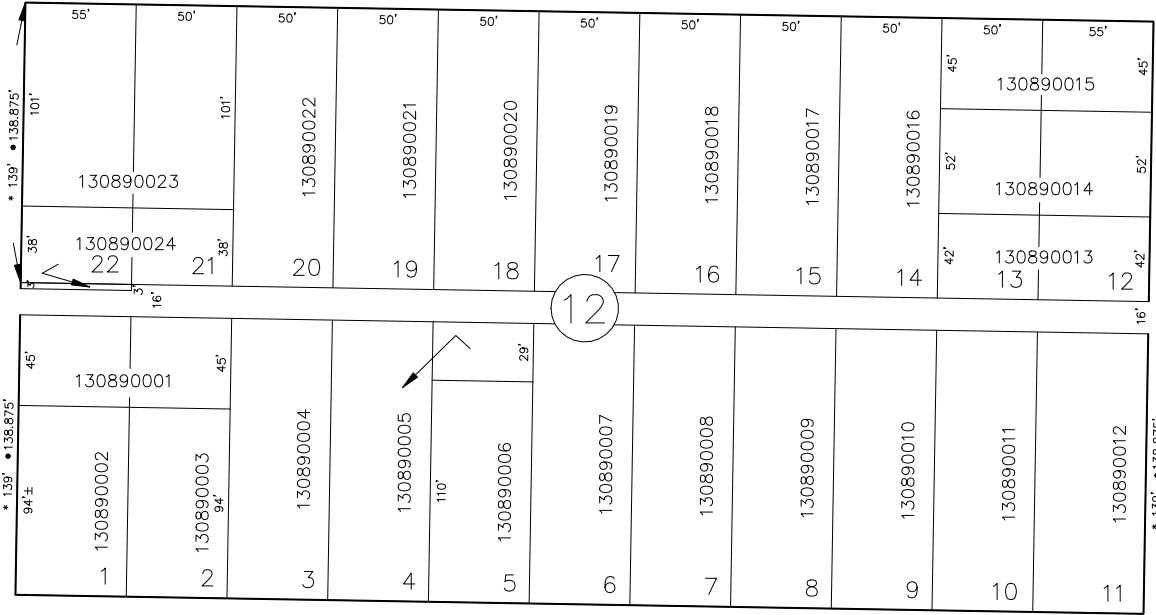
TAYLOR AVENUE

SEE PAGE 91

SEE PAGE 124

SEE PAGE 123

JPS 7-94



13

SEE PAGE 90

FOR COMPLETE ENG DATA SEE
ORIGINAL DEDICATION PLAT IN
BOOK 6, PAGE 1 OF RECORDS.

• OGDEN CITY ENG. DEPT. PLATS
• ORIG. DED. PLAT

25TH STREET

S 89°02' E